

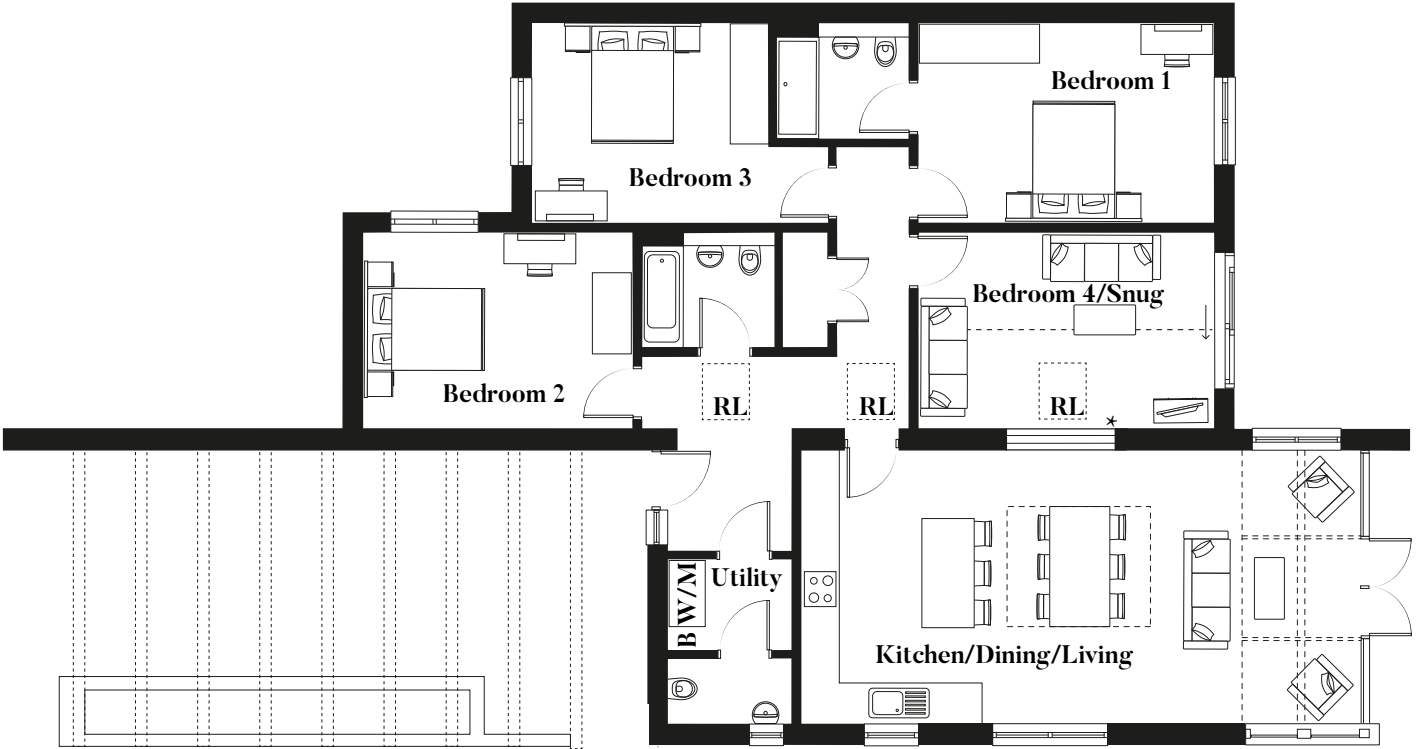


# Plot 1

4 BEDROOM HOUSE

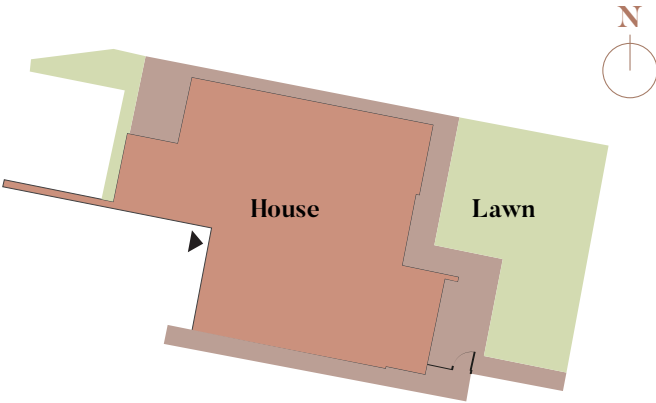
# Plot 1

4 Bedroom House



## Dimensions

|                       |             |                   |
|-----------------------|-------------|-------------------|
| Kitchen/Dining/Living | 9.2m x 4.5m | 30' 6" x 14' 12"  |
| Bedroom 1             | 4.9m x 3.3m | 16' 2" x 10' 11"  |
| Bedroom 2             | 4.4m x 3.2m | 14' 9" x 10' 9"   |
| Bedroom 3             | 3.9m x 3.3m | 12' 11" x 10' 11" |
| Bedroom 4/Snug        | 4.9m x 3.2m | 16' 2" x 10' 9"   |



## Floor Plan Key

B - Boiler, W/M - Space for Washing Machine/Dryer, RL - Roof light

HT D - These details are intended to give a general indication of the development and do not form part of any contract. \* Potential to be open plan subject to build stage. Acorn Property Group reserves the right to alter any part of the development, specification or floor layout at any time. The dimensions are maximum and approximate and may vary based on the internal finish. Dimensions are to the widest part of each room scaled down from architects plans. Furniture measurements should only be taken from the completed property. These details are believed to be correct but neither the agent nor Acorn Property Group accept the liability whatsoever for any misrepresentation made either in these details or orally. Furniture is shown for indicative purposes only. Fitted wardrobes are not included. Computer generated images for illustrative purposes only. [06/23]



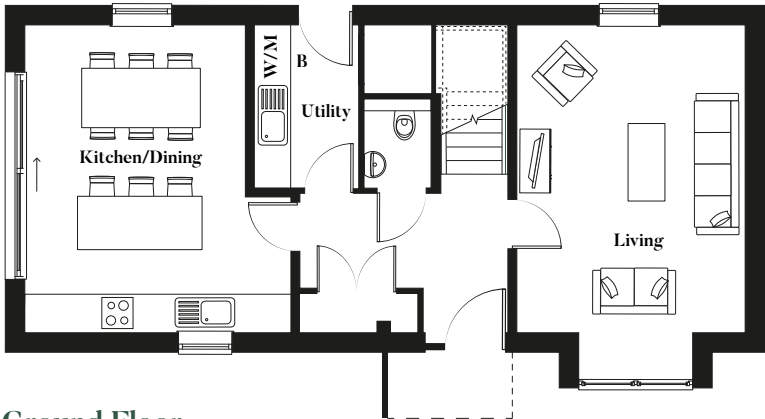


# Plot 2

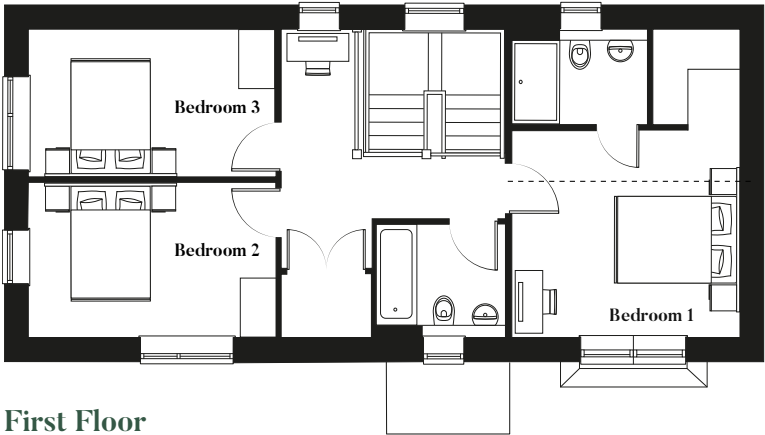
3 BEDROOM HOUSE

## Plot 2

3 Bedroom House



Ground Floor



First Floor

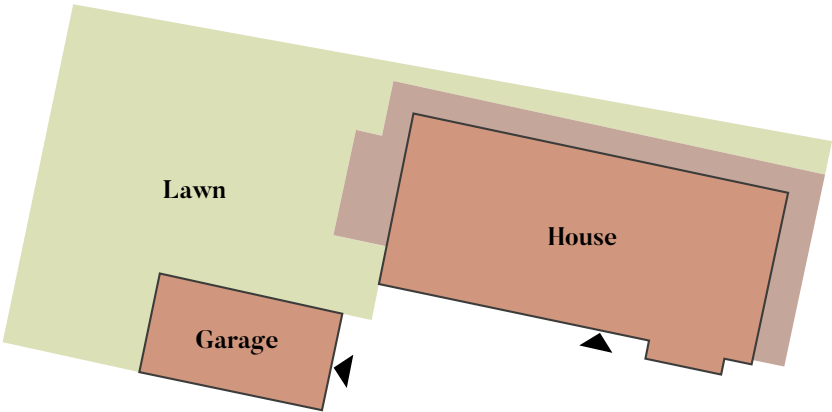


### Ground Floor

|                |             |                 |
|----------------|-------------|-----------------|
| Kitchen/Dining | 5.1m x 4.4m | 17' 0" x 14' 9" |
| Living         | 5.1m x 3.8m | 17' 0" x 12' 8" |

### First Floor

|           |             |                 |
|-----------|-------------|-----------------|
| Bedroom 1 | 3.8m x 3.4m | 12' 8" x 11' 5" |
| Bedroom 2 | 4.2m x 2.6m | 13' 10" x 8' 7" |
| Bedroom 3 | 4.2m x 2.4m | 13' 10" x 8' 2" |



### Floor Plan Key

B - Boiler, W/M - Space for Washing Machine/Dryer

HT A-01 - These details are intended to give a general indication of the development and do not form part of any contract. Acorn Property Group reserves the right to alter any part of the development, specification or floor layout at any time. The dimensions are maximum and approximate and may vary based on the internal finish. Dimensions are to the widest part of each room scaled down from architects plans. Furniture measurements should only be taken from the completed property. These details are believed to be correct but neither the agent nor Acorn Property Group accept the liability whatsoever for any misrepresentation made either in these details or orally. Furniture is shown for indicative purposes only. Fitted wardrobes are not included. Computer generated images for illustrative purposes only. [06/23]



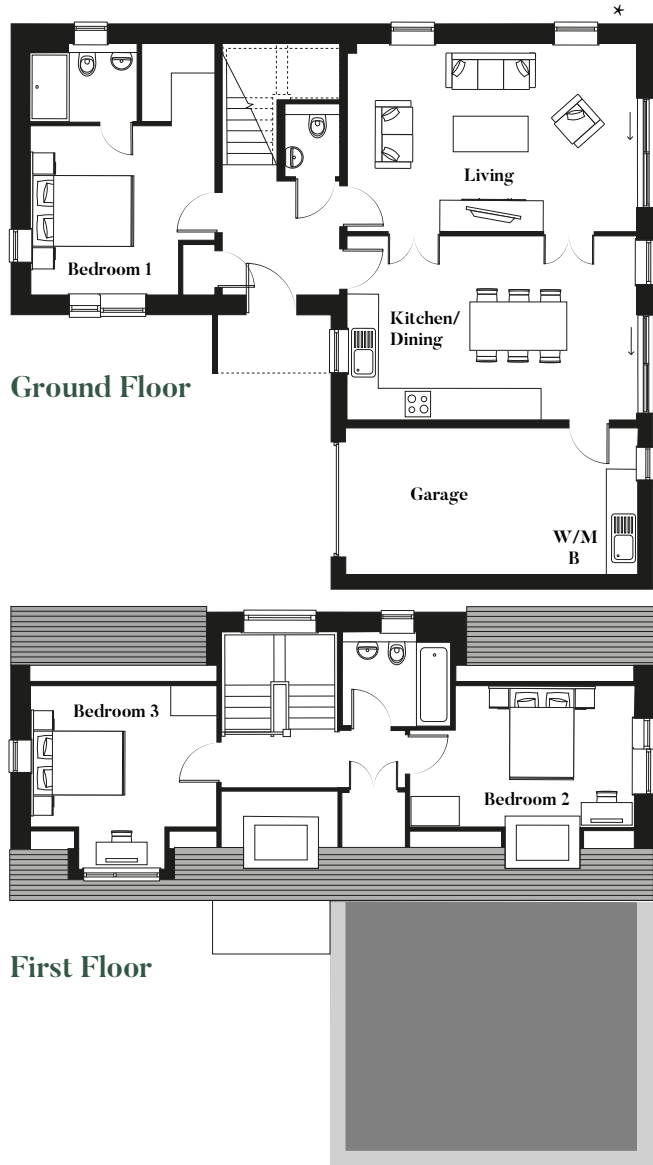


# Plots 3&4

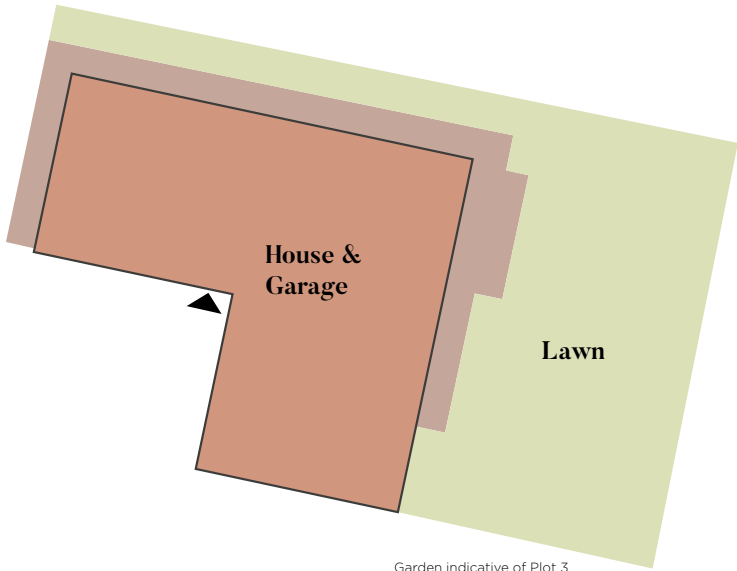
3 BEDROOM HOUSE

# Plots 3&4

3 Bedroom House



|   |             |                 |
|---|-------------|-----------------|
|  |             |                 |
| <b>Ground Floor</b>   |             |                 |
| Kitchen/Dining  | 5.9m x 3.7m | 19' 7" x 12' 5" |
| Living  | 5.9m x 3.8m | 19' 7' x 12' 8" |
| Bedroom 1   | 3.8m x 3.4m | 12' 6" x 11' 5" |
| <b>First Floor</b>  |             |                 |
| Bedroom 2   | 3.8m x 2.9m | 12' 8" x 9' 8"  |
| Bedroom 3   | 4.6m x 2.9m | 15' 3" x 8' 9"  |



Garden indicative of Plot 3

**Floor Plan Key**  
B - Boiler, W/M - Space for Washing Machine/Dryer

HT B - These details are intended to give a general indication of the development and do not form part of any contract. \*Please note - windows applicable to Plot 3. Acorn Property Group reserves the right to alter any part of the development, specification or floor layout at any time. The dimensions are maximum and approximate and may vary based on the internal finish. Dimensions are to the widest part of each room scaled down from architects plans. Furniture measurements should only be taken from the completed property. These details are believed to be correct but neither the agent nor Acorn Property Group accept the liability whatsoever for any misrepresentation made either in these details or orally. Furniture is shown for indicative purposes only. Fitted wardrobes are not included. Computer generated images for illustrative purposes only. [06/23]



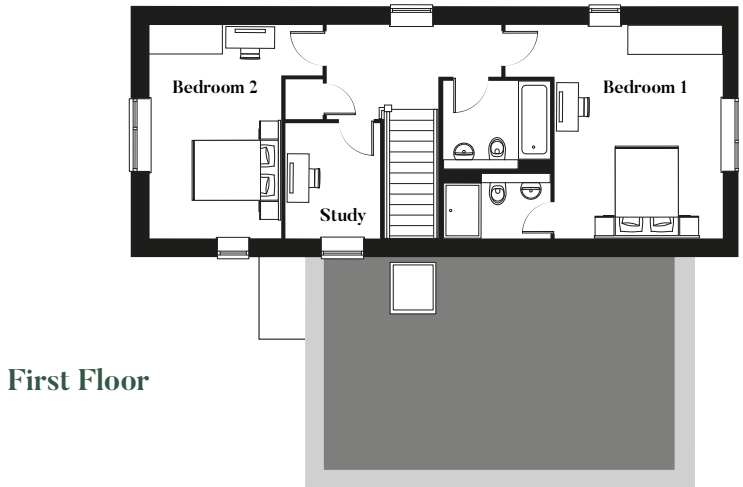
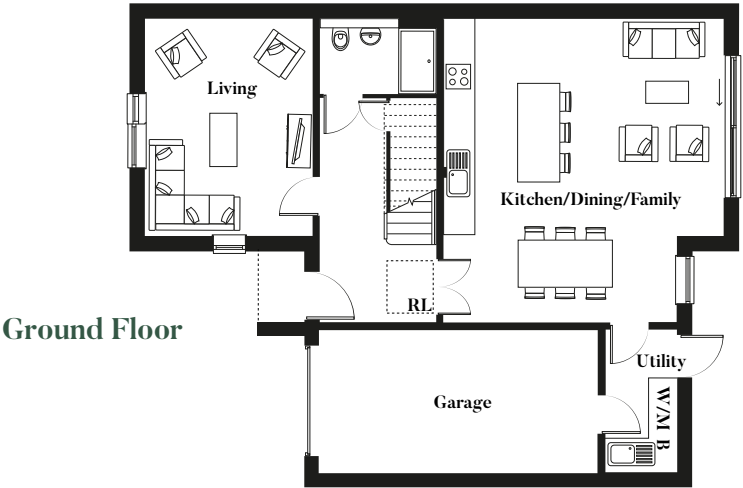


# Plot 5

3 BEDROOM HOUSE

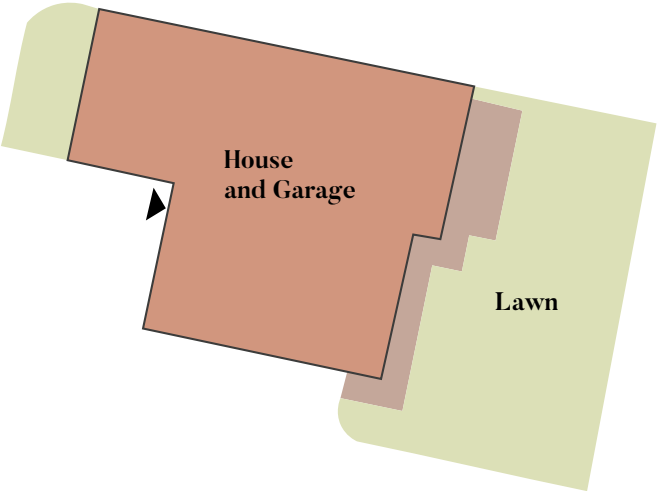
# Plot 5

3 Bedroom House





| Ground Floor          |             |                  |
|-----------------------|-------------|------------------|
| Kitchen/Dining/Family | 6.4m x 6.0m | 21' 3" x 19' 9"  |
| Living                | 4.6m x 3.5m | 15' 2" x 11' 8"  |
| First Floor           |             |                  |
| Bedroom 1             | 4.6m x 3.6m | 15' 2" x 11' 11" |
| Bedroom 2             | 4.6m x 2.8m | 15' 2" x 9' 3"   |
| Study / Bedroom 3     | 2.5m x 2.0m | 8' 3" x 6' 9"    |



**Floor Plan Key**  
B - Boiler, W/M - Space for Washing Machine/Dryer, RL - Rooflight

HT E - These details are intended to give a general indication of the development and do not form part of any contract. Acorn Property Group reserves the right to alter any part of the development, specification or floor layout at any time. The dimensions are maximum and approximate and may vary based on the internal finish. Dimensions are to the widest part of each room scaled down from architects plans. Furniture measurements should only be taken from the completed property. These details are believed to be correct but neither the agent nor Acorn Property Group accept the liability whatsoever for any misrepresentation made either in these details or orally. Furniture is shown for indicative purposes only. Fitted wardrobes are not included. Computer generated images for illustrative purposes only. [06/23]





# Plots 6,7&8

4 BEDROOM HOUSE

## Plots 6, 7 & 8

4 Bedroom House

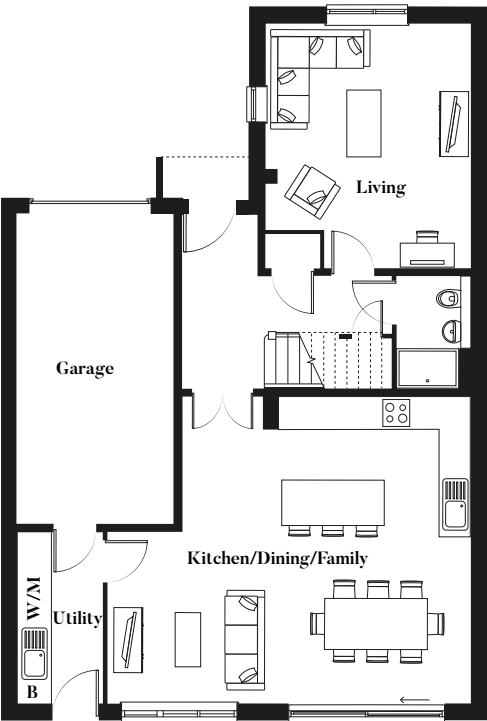


### Ground Floor

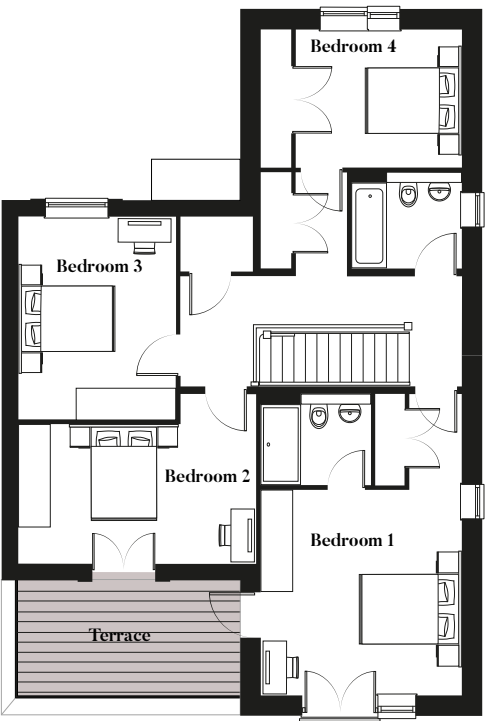
|                       |             |                 |
|-----------------------|-------------|-----------------|
| Kitchen/Dining/Family | 7.1m x 6.0m | 23' 5" x 19' 8" |
| Living                | 4.7m x 4.0m | 13' 8" x 13' 4" |

### First Floor

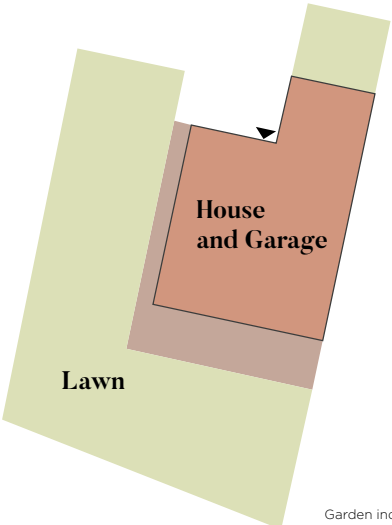
|           |             |                 |
|-----------|-------------|-----------------|
| Bedroom 1 | 4.1m x 4.0m | 13' 6" x 13' 4" |
| Bedroom 2 | 4.7m x 2.8m | 15' 7" x 9' 3"  |
| Bedroom 3 | 3.9m x 3.1m | 12' 2" x 10' 4" |
| Bedroom 4 | 3.3m x 2.7m | 11' 0" x 9' 1"  |



Ground Floor



First Floor



Garden indicative of Plot 8

### Floor Plan Key

B - Boiler, W/M - Space for Washing Machine/Dryer

HT C - These details are intended to give a general indication of the development and do not form part of any contract. Acorn Property Group reserves the right to alter any part of the development, specification or floor layout at any time. The dimensions are maximum and approximate and may vary based on the internal finish. Dimensions are to the widest part of each room scaled down from architects plans. Furniture measurements should only be taken from the completed property. These details are believed to be correct but neither the agent nor Acorn Property Group accept the liability whatsoever for any misrepresentation made either in these details or orally. Furniture is shown for indicative purposes only. Fitted wardrobes are not included. Computer generated images for illustrative purposes only. [06/23]



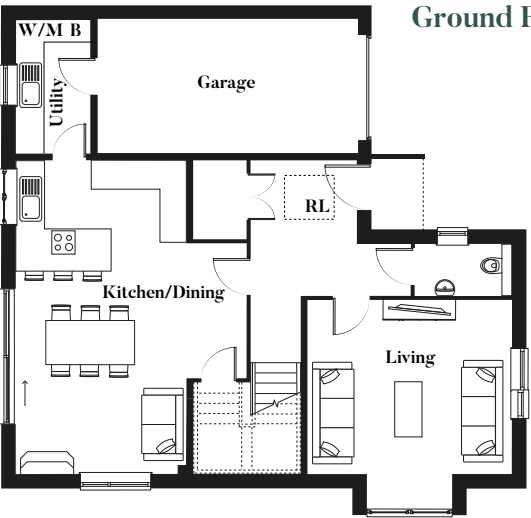


# Plot 9

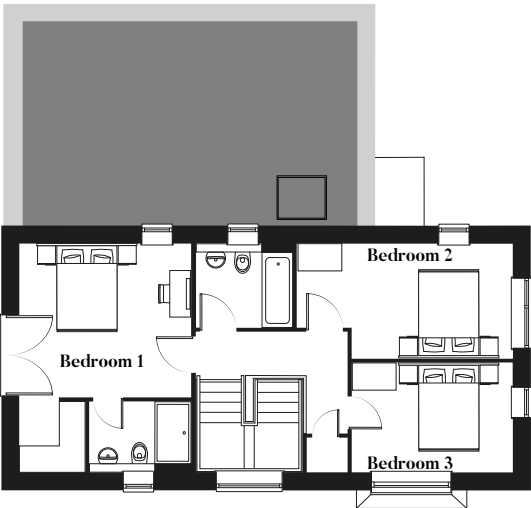
3 BEDROOM HOUSE

# Plot 9

3 Bedroom House



Ground Floor



First Floor

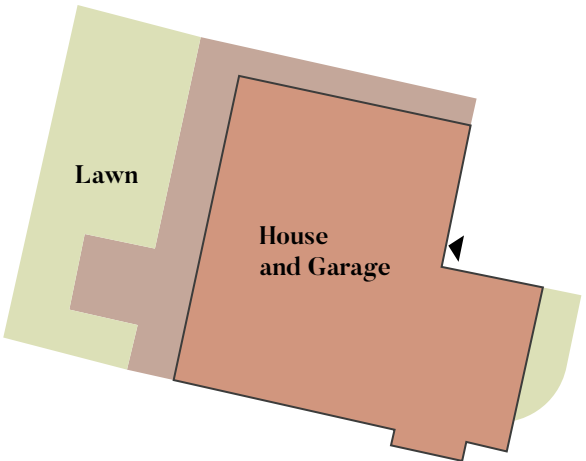


## Ground Floor

|                |             |                  |
|----------------|-------------|------------------|
| Kitchen/Dining | 7.0m x 5.2m | 23' 2" x 17' 1"  |
| Living         | 4.6m x 3.9m | 15' 4" x 12' 10" |

## First Floor

|           |             |                 |
|-----------|-------------|-----------------|
| Bedroom 1 | 3.8m x 3.4m | 12' 8" x 11' 5" |
| Bedroom 2 | 4.9m x 2.6m | 16' 3" x 8' 7"  |
| Bedroom 3 | 3.7m x 2.4m | 12' 3" x 8' 2"  |



## Floor Plan Key

B - Boiler, W/M - Space for Washing Machine/Dryer, RL - Rooflight

HT F - These details are intended to give a general indication of the development and do not form part of any contract. Acorn Property Group reserves the right to alter any part of the development, specification or floor layout at any time. The dimensions are maximum and approximate and may vary based on the internal finish. Dimensions are to the widest part of each room scaled down from architects plans. Furniture measurements should only be taken from the completed property. These details are believed to be correct but neither the agent nor Acorn Property Group accept the liability whatsoever for any misrepresentation made either in these details or orally. Furniture is shown for indicative purposes only. Fitted wardrobes are not included. Computer generated images for illustrative purposes only. [06/23]



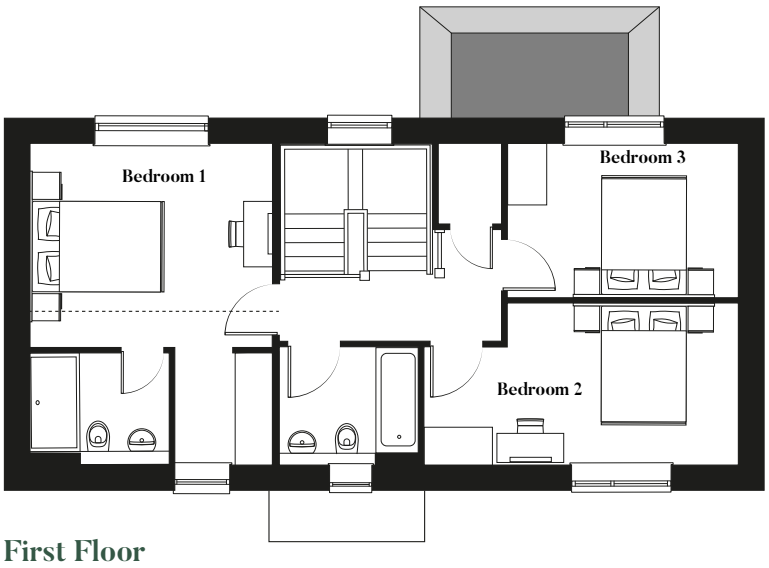
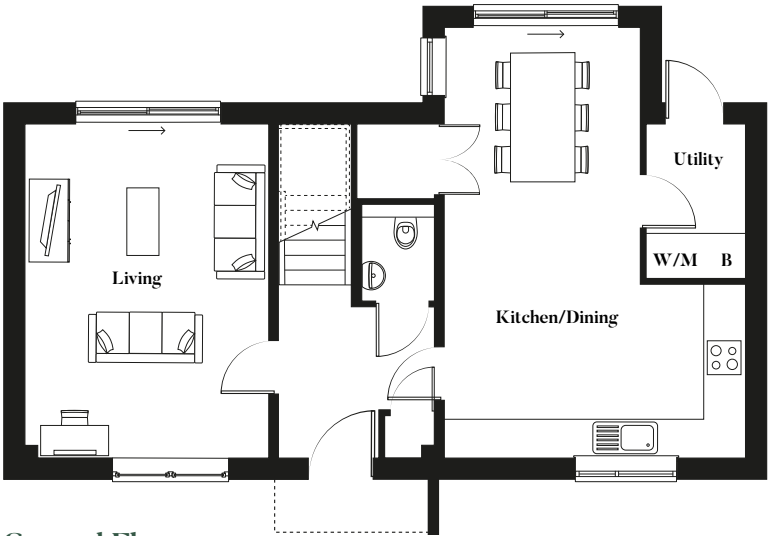


# Plot 10

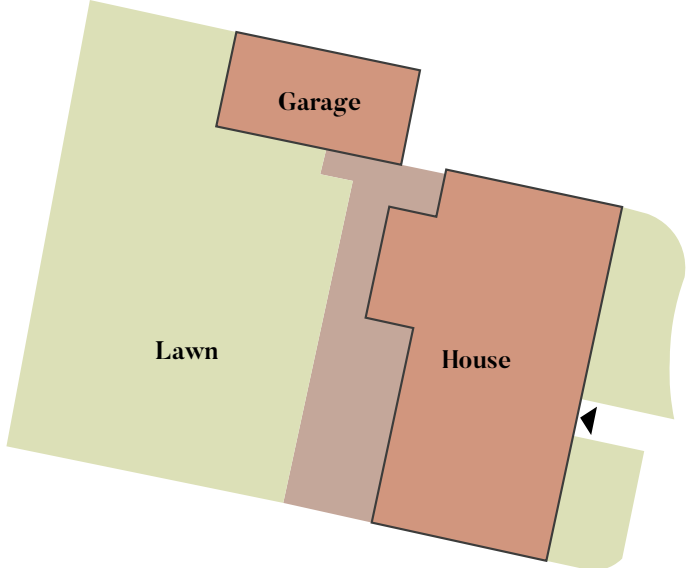
3 BEDROOM HOUSE

# Plot 10

3 Bedroom House



|   |             |                 |
|---|-------------|-----------------|
|  |             |                 |
| <b>Ground Floor</b>   |             |                 |
| Kitchen/Dining  | 6.7m x 4.6m | 22' 2" x 15' 2" |
| Living  | 5.1m x 3.7m | 17' 0" x 12' 5" |
| <b>First Floor</b>  |             |                 |
| Bedroom 1   | 3.7m x 3.2m | 12' 5" x 10' 9" |
| Bedroom 2   | 4.9m x 2.6m | 16' 1" x 8' 7"  |
| Bedroom 3   | 3.6m x 2.4m | 11' 10" x 8' 2" |



**Floor Plan Key**  
B - Boiler, W/M - Space for Washing Machine/Dryer

HT A-02 - These details are intended to give a general indication of the development and do not form part of any contract. Acorn Property Group reserves the right to alter any part of the development, specification or floor layout at any time. The dimensions are maximum and approximate and may vary based on the internal finish. Dimensions are to the widest part of each room scaled down from architects plans. Furniture measurements should only be taken from the completed property. These details are believed to be correct but neither the agent nor Acorn Property Group accept the liability whatsoever for any misrepresentation made either in these details or orally. Furniture is shown for indicative purposes only. Fitted wardrobes are not included. Computer generated images for illustrative purposes only. [06/23]