



A 2 bedroom apartment offering prestigious living within the grounds of a Grade II listed building set amid 6 acres of parkland located in the Central Bath Conservation area.

10 Hope Place, Lansdown Road, Bath, BA1 5DL



**HOPE HOUSE**

LANSDOWN · BATH





KITCHEN/LIVING/DINING AREA



Located on the first floor with lift access, 10 Hope Place offers prestigious living within a naturally light and beautifully proportioned apartment. The 550 sq ft open plan kitchen, dining and living area is entered through imposing double doors where three large sash windows dominate the opposite wall creating a panoramic canvas from dawn to dusk.

The master bedroom features both fitted dressing area and luxuriously appointed twin sink en-suite while the second double bedroom provides ample fitted wardrobe space. The apartment includes one private allocated parking space.



Open Plan Living

- Engineered timber flooring to kitchen, dining and living area
- Soft tone carpet to bedrooms
- Polished marble wall and floor tiling to master en-suite
- Bespoke kitchen with quartz worktops and appliances by Miele and Neff
- Built-in wine cooler
- Fully fitted wardrobes to master bedroom
- Underfloor heating throughout
- Access to residents private tennis court and communal gardens



Master Bedroom



Bedroom 2



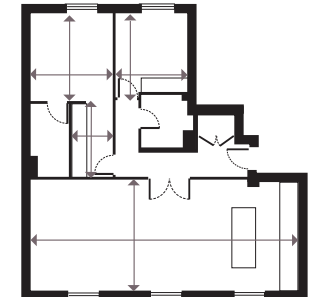


VIEW OF FORMAL LAWN

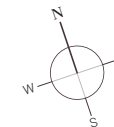




APARTMENT OUTLOOK




Kitchen/Dining/ Living	11.10m x 4.60m	36'5" x 15'1"
Dressing Area	3.00m x 1.10m	9'10" x 3'7"
Master Bedroom	3.60m x 3.40m	11'10" x 11'2"
Bedroom 2	3.30m x 2.90m	10'10" x 9'6"



APARTMENT  
LOCATOR  
FIRST FLOOR







Hope House is nestled amid extensive, rich and mature woodland grounds with immaculate landscaping and a private tennis court.





Located in the prime residential suburb of Lansdown, Hope House has the boutique shopping area of Bartlett Street Quarter on its doorstep as well as being within walking distance of the heart of the city.

In addition, the development enjoys superb road, rail and air connectivity, being 90 minutes journey time from London Paddington by rail.

CLICK BELOW FOR  
AERIAL TOUR



Aerial view of Hope House



# HOPE HOUSE

LANSDOWN · BATH

These particulars are compiled with care to give a fair description but we cannot guarantee their accuracy and they do not constitute an offer or contract. The developer reserves the right to alter any specifications without prior notice. Exterior images of Hope House are actual photography, interiors are of the actual apartment with selected images showing computer generated furniture. All development CGIs and artwork contained in this brochure are subject to copyright of the developer and cannot be reproduced in any way without prior written consent. Floor plan is intended to be correct, precise details may vary, furniture shown for illustrative purposes only. Maximum dimensions are given for each room.

