



**TWO FANTASTIC COMMERCIAL UNITS
AT THE LINER, FALMOUTH**
Restaurant and retail space



THE LINER

The Liner is a collection of fifty-three beachfront apartments which will enjoy uninterrupted, south facing sea views over award-winning Gyllyngvase Beach. This striking new building will enhance the level of quality on the seafront in Falmouth.

Set opposite Gyllyngvase Beach in Falmouth and adjacent to St Michaels Hotel & Spa, residents will benefit from having an array of luxurious facilities on their doorstep. The two commercial units at The Liner offer a rare opportunity to be part of a landmark development, on one of Cornwall's most beautiful coastlines. The commercial spaces are in a prime position on the ground floor.



LOCATION

Located less than a 10-minute walk from the town of Falmouth, Gyllyngvase Beach is the most popular beach in Falmouth and is excellent for water-sports and family days out. The beach is also one of the eight beaches in Cornwall to have received blue flag status.

The historic harbour town of Falmouth is known for its deep natural harbour on the Fal Estuary. A bustling university town, Falmouth has an ever-expanding calendar of events and festivals. Drawing in tourists to the area with exhibitions at The National Maritime Museum and the impressive Tudor Fortress, Pendennis Castle is also located nearby.

The restaurant and retail space will offer day-trippers, holidaymakers and locals a year-round service due to the popular beachside location.

TRAVEL TIMES

By Car

Newquay	24 miles	52 mins
St Ives	30 miles	52 mins
Exeter	98 miles	2hrs

Nearest airports

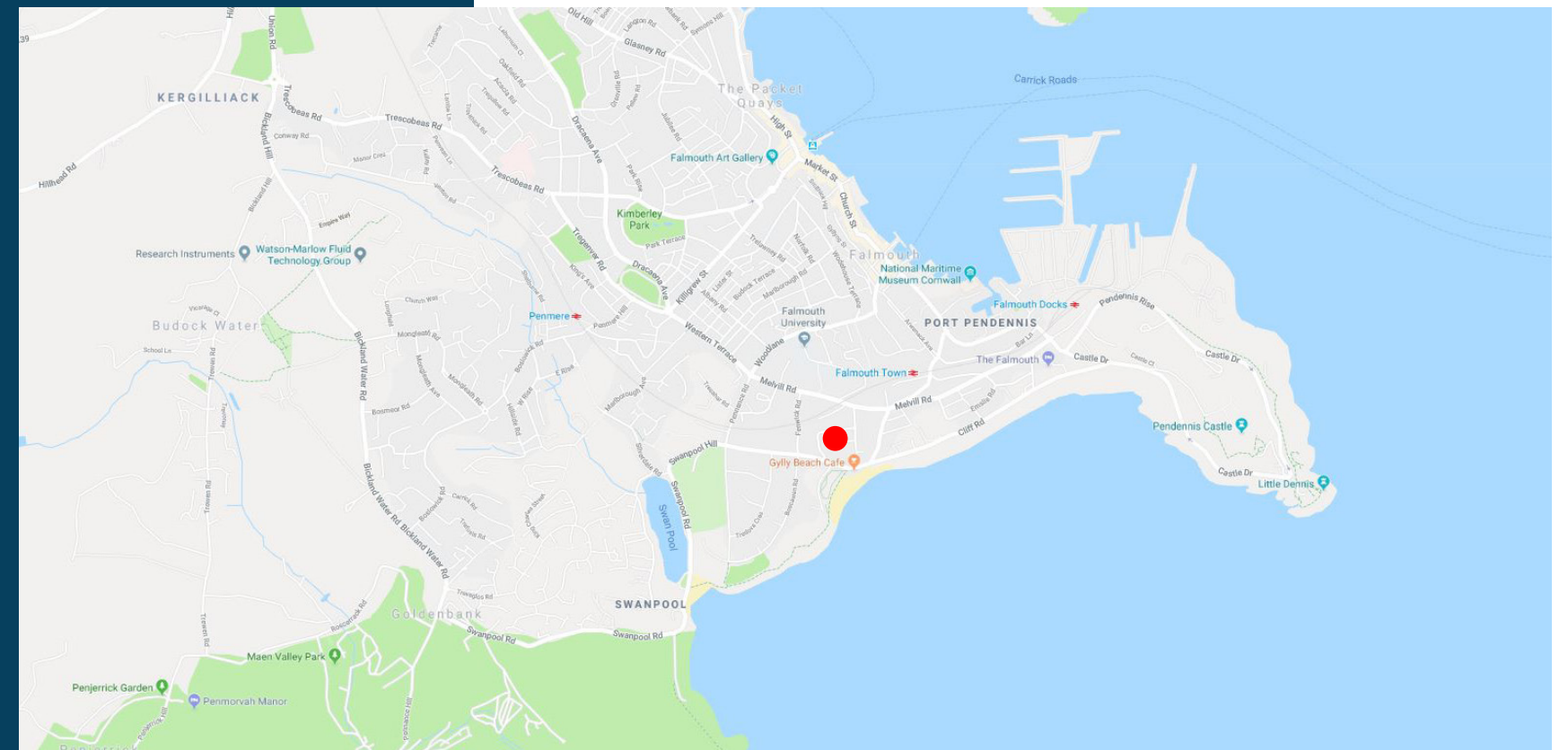
Newquay	31 miles	56 mins
Exeter	105 miles	2hrs 2mins

By train

(from nearest station, Falmouth Town - 0.4 miles)		
Exeter		2hrs 55 mins
London (Paddington)		5hrs 44 mins



Satellite view of Gyllyngvase Beach showing development area



Map showing site location

THE SPACE

The restaurant space is ideally located for business among a popular tourist destination with fantastic sea views. The second commercial opportunity is a freehold retail space, both are located on the ground floor. The site is expected to reach practical completion by early 2020.

RESTAURANT

The restaurant circa 2,270 ft² will be supplied as a shell to allow the operator to design their own bespoke space. The area will provide for over 70 internal covers, and features a stunning south-facing alfresco terrace which can be used as a dining area for additional customers to enjoy the daytime sun or the fabulous evening sunsets synonymous with Cornwall.

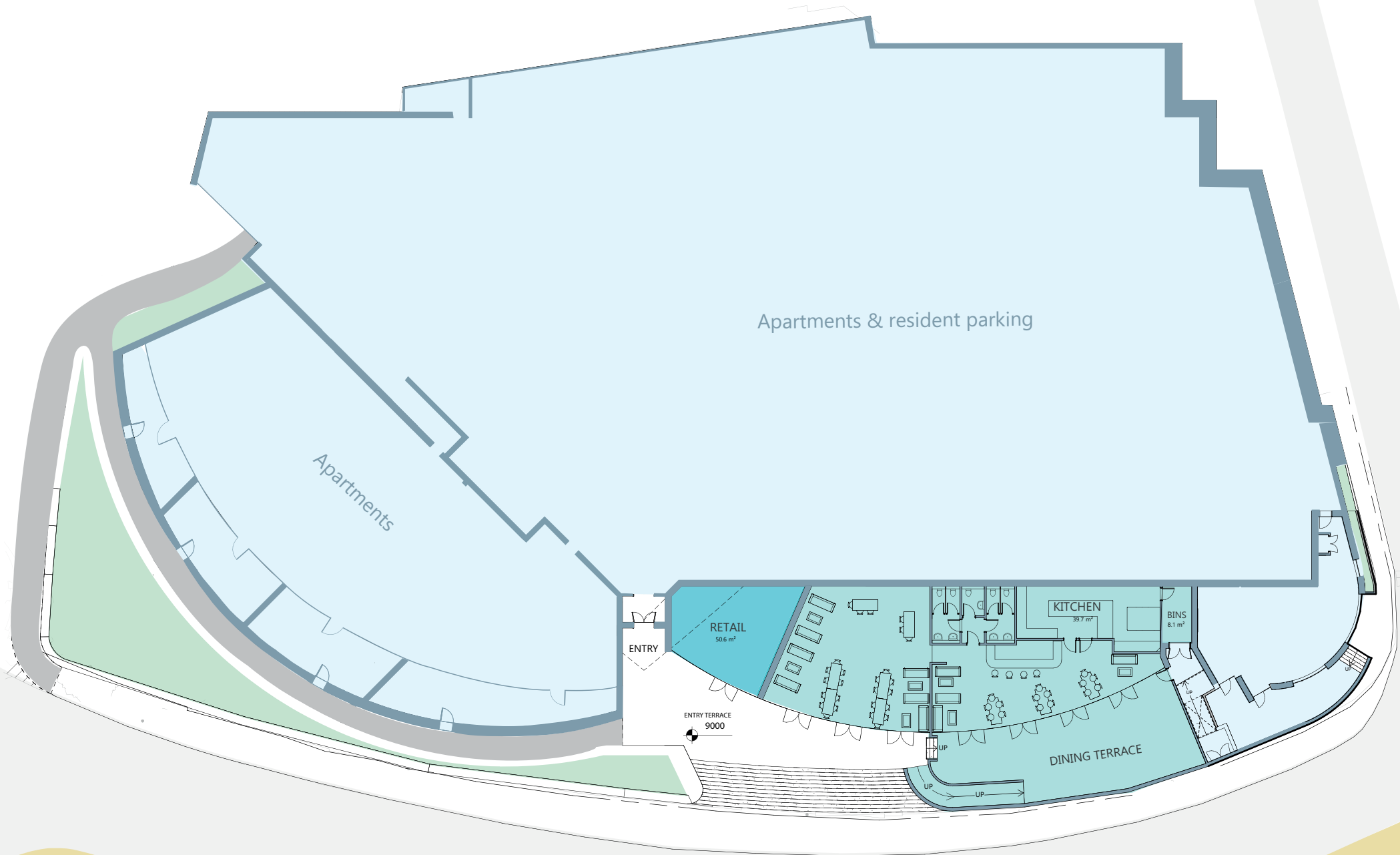
The restaurant is available on a 999 year leasehold and a building service charge will apply further details on application. Offers invited + VAT (if applicable).

RETAIL

The retail unit will be circa 538 ft² and supplied as a shell to allow customisation to suit the operational needs of the space. Located on the ground floor the space is ideal to capture the attention of the many passers-by visiting the area.

The space will be available on a 999 year leasehold and a building service charge will apply further details on application. Offers invited + VAT (if applicable).





Gyllyngvase beach

Gylly Beach Cafe

SITE PLAN

The site is in an excellent position and offers a rare opportunity to purchase a prime ground floor unit within an exclusive residential development. Located at front of the development both commercial spaces will be clearly visible and accessible from street level.

INVESTMENT SUMMARY

Set in a prime ground floor location of a landmark residential development, the site is expected to reach practical completion by early 2020.

RESTAURANT

Size: Circa 2,270 ft²

Terms : 999 year leasehold

Unit supplied as shell

RETAIL

Size: Circa 538 ft²

Terms : 999 year leasehold

Unit supplied as shell

Contact us for further information or to arrange a viewing.

CONTACT

Nicola Rafferty

Land and Commercial Facilitator

01637 839 952

nicolar@acornblue.co.uk

acornpropertygroup.org

Viewing by appointment only.

