

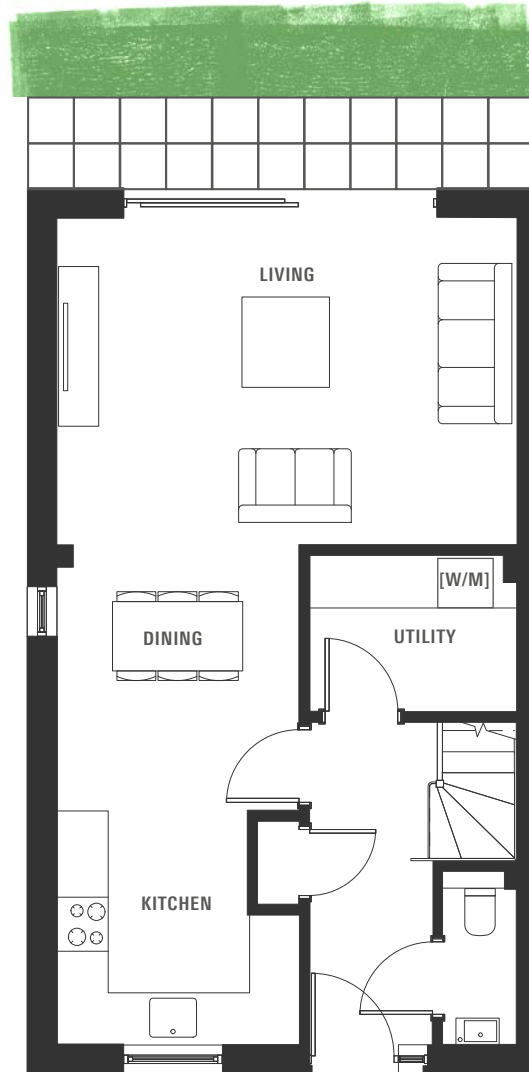
T10

3 BEDROOM HOUSE

Plot Numbers

32-37 & 146-149

- Open plan kitchen/dining/living room
- Sliding doors onto the garden from living area
- Separate utility room
- En-suite to bedroom one
- Garage and two allocated parking spaces



Dimensions

Ground Floor

1. **KITCHEN**
2.80M X 2.70M / 9' 2" X 8' 10"
2. **LIVING**
5.30M X 3.70M / 17' 5" X 12' 2"
3. **DINING**
2.80M X 3.00M / 9' 2" X 9' 10"

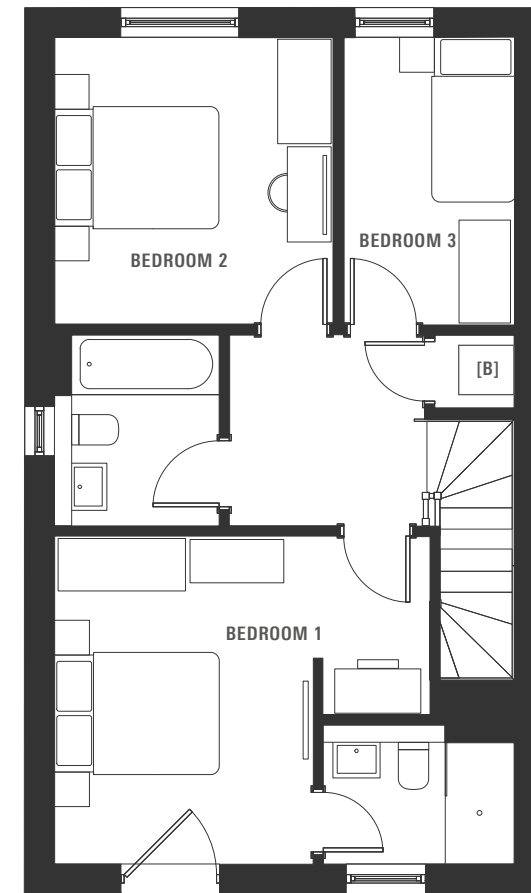
First Floor

4. **BEDROOM 1**
2.90M X 3.70M / 9' 6" X 12' 2"
5. **BEDROOM 2**
3.20M X 3.30M / 10' 6" X 10' 10"
6. **BEDROOM 3**
1.90M X 3.30M / 6' 3" X 10' 10"

KEY:

[W/M] SPACE FOR WASHING MACHINE

[B] BOILER



Please note: Plots 32, 34, 36, 146 & 148 are handed. Ask for more information.

These details are intended to give a general indication of the development and do not form part of any contract. Acorn Property Group reserves the right to alter any part of the development, specification or floor layout at any time. The dimensions are maximum and approximate and may vary based on the internal finish. Dimensions are to the widest part of each room scaled down from architects plans. Furniture measurements should only be taken from the completed property. These details are believed to be correct but neither the agent nor Acorn Property Group accept the liability whatsoever for any misrepresentation made either in these details or orally. Furniture is shown for indicative purposes only. Fitted wardrobes and washing machine are not included. Computer generated image for illustrative purposes only. Gardens/terraces are shown for illustrative purposes and are not plot specific. 09/20