



## T6 - FLOORPLANS

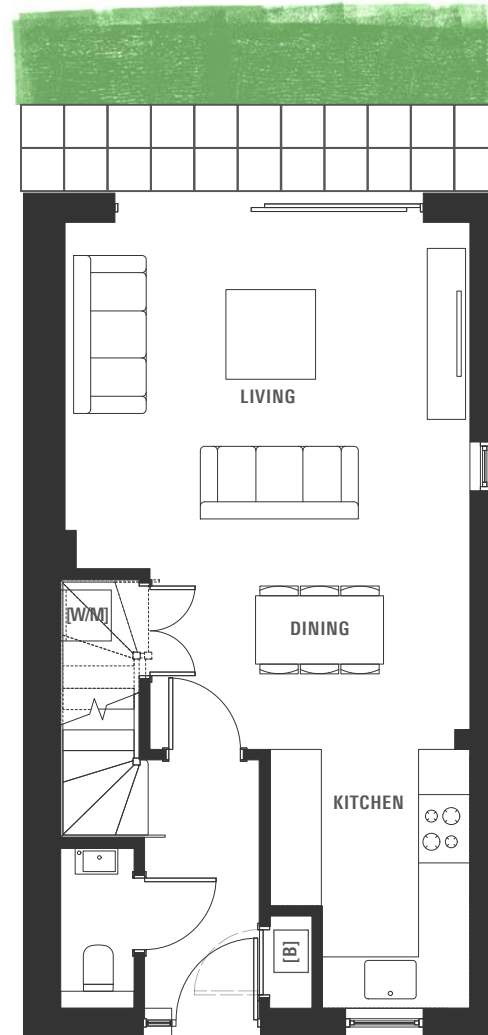
# T6

## 3 BEDROOM TOWNHOUSE

### Plot Numbers

6, 48, 49, 52, 53, 58-61, 73-76, 81-84  
& 87-90

- Three double bedrooms
- Dressing area and en-suite to bedroom one
- Open plan kitchen/dining/living room with sliding doors onto the garden
- Additional storage to each floor
- Garage and two allocated parking spaces



### Dimensions

#### Ground Floor

- KITCHEN**  
2.30M X 3.30M  
7' 7" X 10' 10"
- DINING**  
3.70M X 2.10M  
12' 2" X 6' 11"
- LIVING**  
4.70M X 4.00M  
15' 5" X 13' 1"

#### First Floor

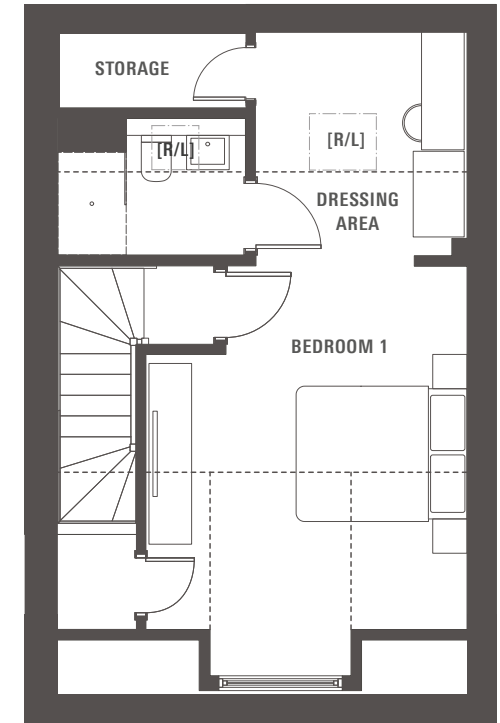
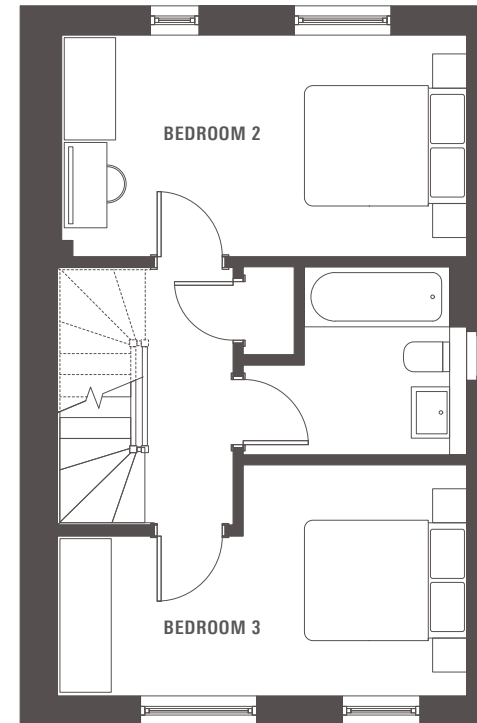
- BEDROOM 2**  
4.70M X 2.60M  
15' 5" X 8' 6"
- BEDROOM 3**  
4.80M X 2.70M  
15' 9" X 8' 10"

#### Second Floor

- BEDROOM 1**  
3.70M X 3.50M  
12' 2" X 11' 6"
- DRESSING AREA**  
2.40M X 2.00M  
7' 10" X 6' 7"

#### KEY:

- [R/L] ROOFLIGHT
- SLOPED CEILINGS
- [W/M] SPACE FOR WASHING MACHINE
- [B] BOILER



Please note: Plots 60, 61, 81, 82, 83, 84, 87 & 89 are handed. Ask for more information.  
Windows may differ on specific plots. Speak to a sales advisor for more information.

These details are intended to give a general indication of the development and do not form part of any contract. Acorn Property Group reserves the right to alter any part of the development, specification or floor layout at any time. The dimensions are maximum and approximate and may vary based on the internal finish. Dimensions are to the widest part of each room scaled down from architects plans. Furniture measurements should only be taken from the completed property. These details are believed to be correct but neither the agent nor Acorn Property Group accept the liability whatsoever for any misrepresentation made either in these details or orally. Furniture is shown for indicative purposes only. Fitted wardrobes and washing machine are not included. Computer generated image for illustrative purposes only. Gardens/terraces are shown for illustrative purposes and are not plot specific. 09/20



THE  
**OLD  
PRINTS  
WORKS**

**3 BEDROOM  
TOWNHOUSE**

Plots 6, 48, 49, 52,  
53, 58-61, 73-76,  
81-84 & 87-90

