



T9 - FLOORPLANS

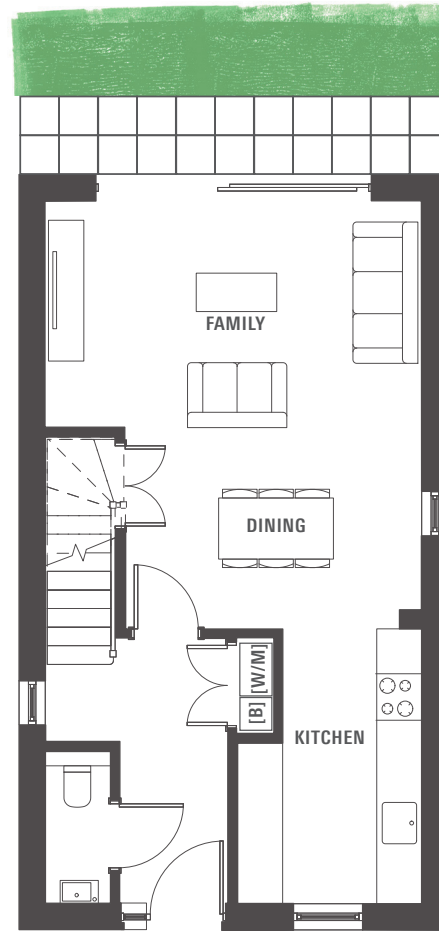
T9

4 BEDROOM TOWNHOUSE

Plot Numbers

54-57, 62-64, 91, 96, 110 & 117

- Open plan kitchen/dining/family room with sliding doors onto the garden
- Additional storage to each floor
- Separate living room on first floor
- En-suite to bedroom one
- Garage and two allocated parking spaces



Dimensions

Ground Floor

- KITCHEN**
3.50m x 2.30m
11'6" x 7'7"
- DINING**
3.70m x 2.60m
12'2" x 8'6"
- FAMILY**
4.80m x 2.90m
15'9" x 9'6"

First Floor

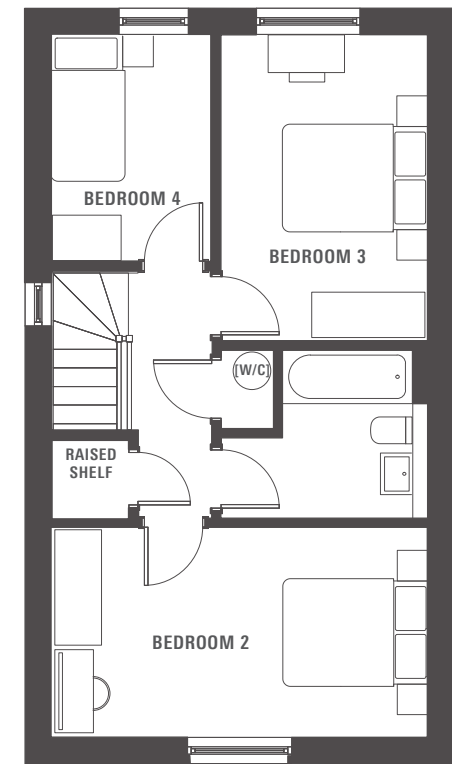
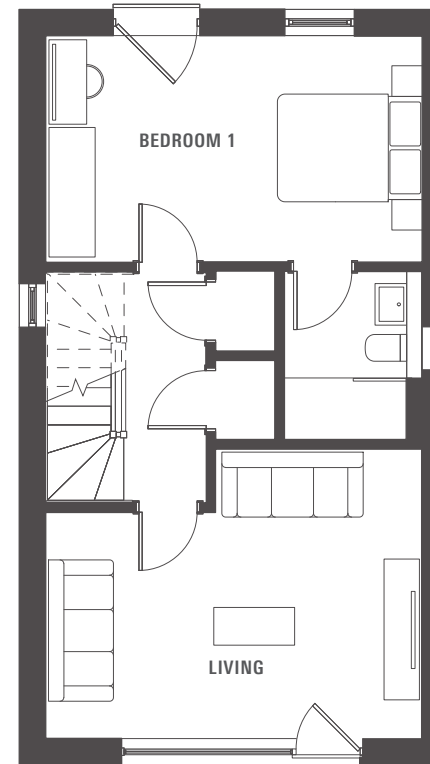
- LIVING**
4.80m x 3.70m
15'9" x 12'2"
- BEDROOM 1**
4.80m x 2.90m
15'9" x 9'6"

Second Floor

- BEDROOM 2**
4.80m x 2.70m
15'9" x 8'10"
- BEDROOM 3**
3.90m x 2.60m
12'10" x 8'6"
- BEDROOM 4**
2.90m x 2.10m
9'6" x 6'11"

KEY:

- [B] BOILER
- [W/C] WATER CYLINDER
- [W/M] SPACE FOR WASHIN MACHINE



Window detail differs from shown to plots 54 & 62. Speak to a sales advisor for more information.

These details are intended to give a general indication of the development and do not form part of any contract. Acorn Property Group reserves the right to alter any part of the development, specification or floor layout at any time. The dimensions are maximum and approximate and may vary based on the internal finish. Dimensions are to the widest part of each room scaled down from architects plans. Furniture measurements should only be taken from the completed property. These details are believed to be correct but neither the agent nor Acorn Property Group accept the liability whatsoever for any misrepresentation made either in these details or orally. Furniture is shown for indicative purposes only. Fitted wardrobes and washing machine are not included. Computer generated image for illustrative purposes only. Gardens/terraces are shown for illustrative purposes and are not plot specific. 2021

THE
**OLD
PRINTS
WORKS**

**4 BEDROOM
TOWNHOUSE**

Plots 54-57, 62-64,
91, 96, 110 & 117

