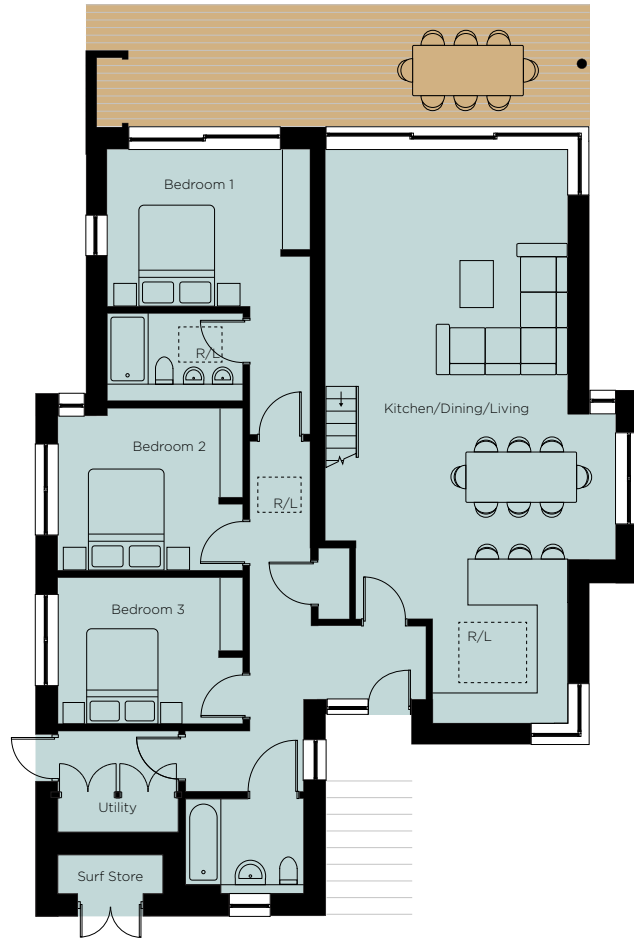
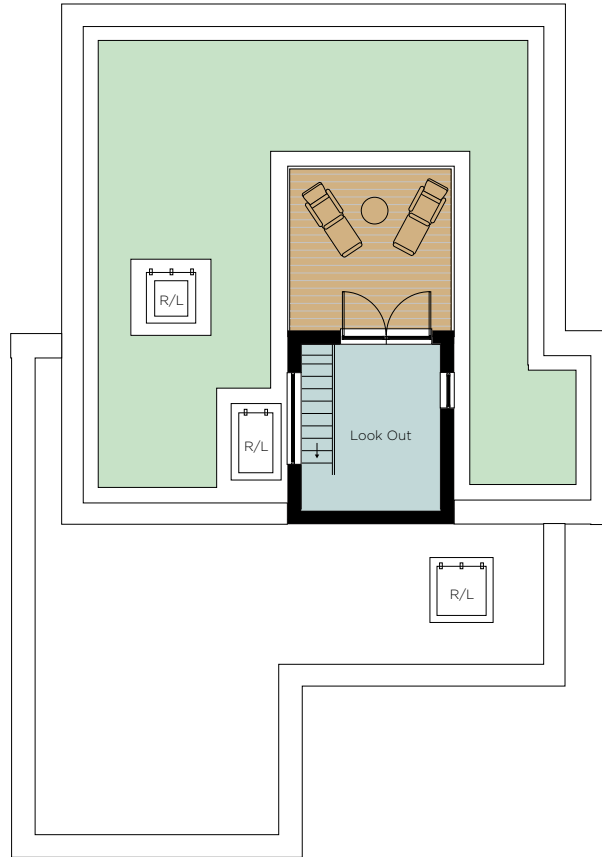


## GROUND FLOOR



## FIRST FLOOR

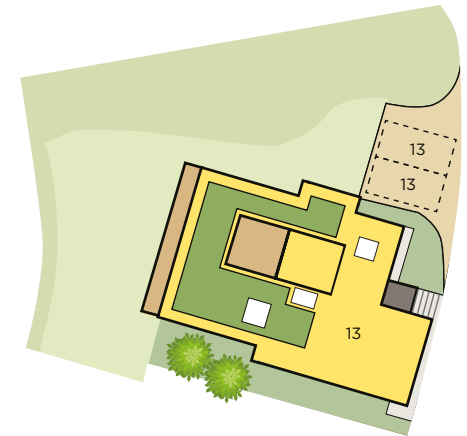
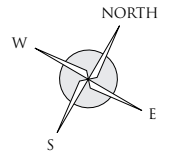


Kitchen/Dining/Living	11.3m x 5.7m	37'0" x 18'7"	R/L = Roof Light
Bedroom 1	4.0m x 3.2m	13'1" x 10'4"	
Bedroom 2	3.6m x 3.0m	11'8" x 9'8"	
Bedroom 3	3.6m x 2.8m	11'8" x 9'1"	



CONSTANTINE BAY  
PADSTOW

HOUSE 13



These details are intended to give a general indication of the development and do not form part of any contract. Due to the nature of the development and the apartments being located within an existing building, some details may be required to change at the point of construction. Acorn Property Group reserves the right to alter any part of the development, specification or floor layout at any time. The dimensions are maximum and approximate and may vary based on the internal finish. Dimensions are to the widest part of each room scaled down from architects plans. Furniture measurements should only be taken from the completed property. These details are believed to be correct but neither the agent nor Acorn Property Group accept the liability whatsoever for any misrepresentation made either in these details or orally. Furniture is shown for indicative purposes only. Fitted wardrobes are not included. Computer generated image for illustrative purposes only. 03/21