

The Mendip

3 1/4 BEDROOM DETACHED

194.8 SQM (2.096 SQFT)

PLOT: 7

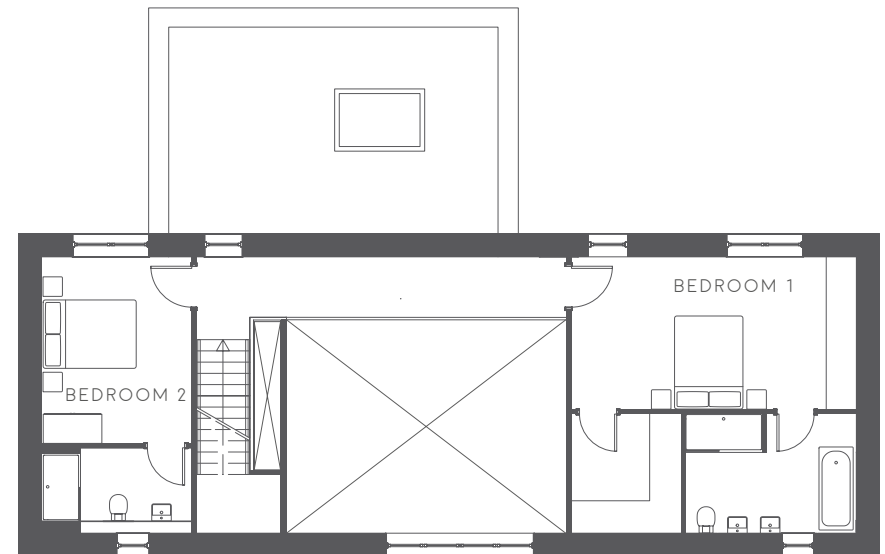
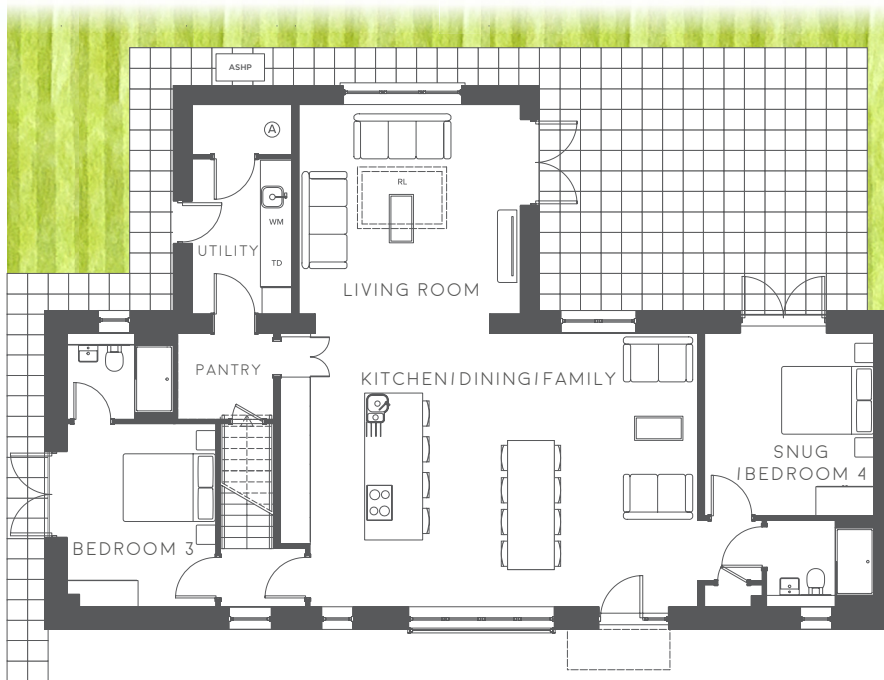


GROUND FLOOR

KITCHEN/DINING/FAMILY	10.0M X 5.7M (32' 10" X 18' 8")
LIVING ROOM	4.6M X 4.3M (15' 1" X 14' 1")
BEDROOM 3	3.8M X 3.1M (12' 6" X 10' 2")
SNUG/BEDROOM 4	3.8M X 3.5M (12' 6" X 11' 6")

FIRST FLOOR

BEDROOM 1	5.9M X 3.1M (19' 4" X 10' 2")
BEDROOM 2	3.8M X 3.1M (12' 6" X 10' 2")



HOUSETYPE E

A Air Source Heat Pump Infrastructure ASHP Air Source Heat Pump RL Roof light WM Space and plumbing for washing machine TD Space for tumble dryer